





Oxfordshire & Buckinghamshire Division

Non Emergency Patient Transport
Service
Buckinghamshire

South Central Ambulance Service 
NHS Trust

Overview

- Provides transport service for patients travelling to & from hospitals for
- Outpatient appointments
- Day hospitals
- Admissions
- Discharges

South Central Ambulance Service 
NHS Trust



Service Level Agreements with NHS Trusts

- Buckinghamshire Hospitals NHS Trust
- Milton Keynes Hospital NHS Trust
- Oxfordshire & Buckinghamshire Mental Health NHS Trust
- Buckinghamshire PCT NHS Trust
- Oxfordshire Consortium NHS Trusts



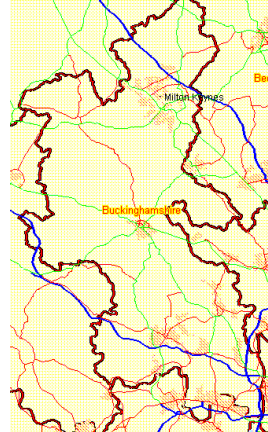
Resources in Buckinghamshire

- 70+ employed part time & full time staff
- 30 vehicles
- 27 voluntary car drivers working a variety of days
- Access to approved local taxi companies
- Access to approved private providers

Operating Area

- All of Buckinghamshire + parts of Herts, Beds and Oxfordshire into main treatment centres

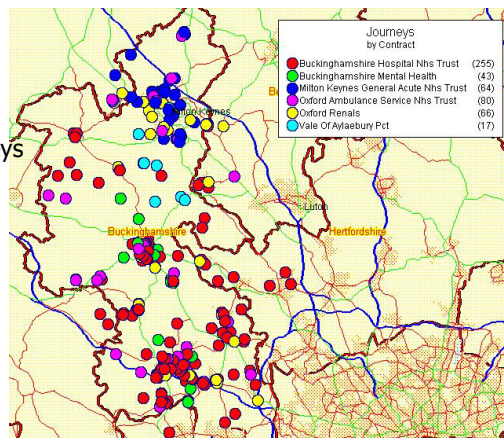
- Stoke Mandeville Hospital
- High Wycombe Hospital
- Amersham Hospital
- Milton Keynes Hospital
- Buckingham Hospital
- Community Hospitals
- Various Day centres
- Renal units at Milton Keynes & High Wycombe



South Central Ambulance Service **NHS**
NHS Trust

Example of daily work

Tuesday 19th June
2007
525 patient journeys





Pressures Faced

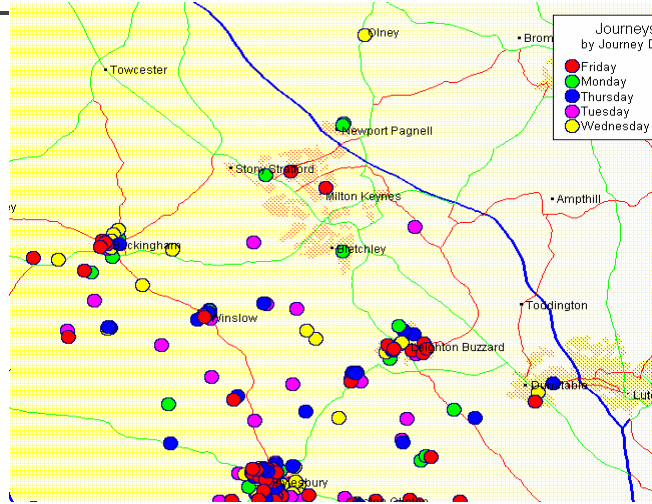
- Need to discharge patients quickly to alleviate bed pressures
- More on the day requests
- PTS only presently provide 8-6 service, need for out of hours service.



Opportunities for partnership working

- Possible sharing of resource with BCC from outlying areas (see map)
- BCC vehicles available to NEPTS when not required (1100-1400)
- Standardised booking / planning system
- Central Resource centre to plan and co-ordinate all Patient Transport and Social service journeys

Weekly Journeys to Aylesbury, Amersham & High Wycombe



■ ANY QUESTIONS